

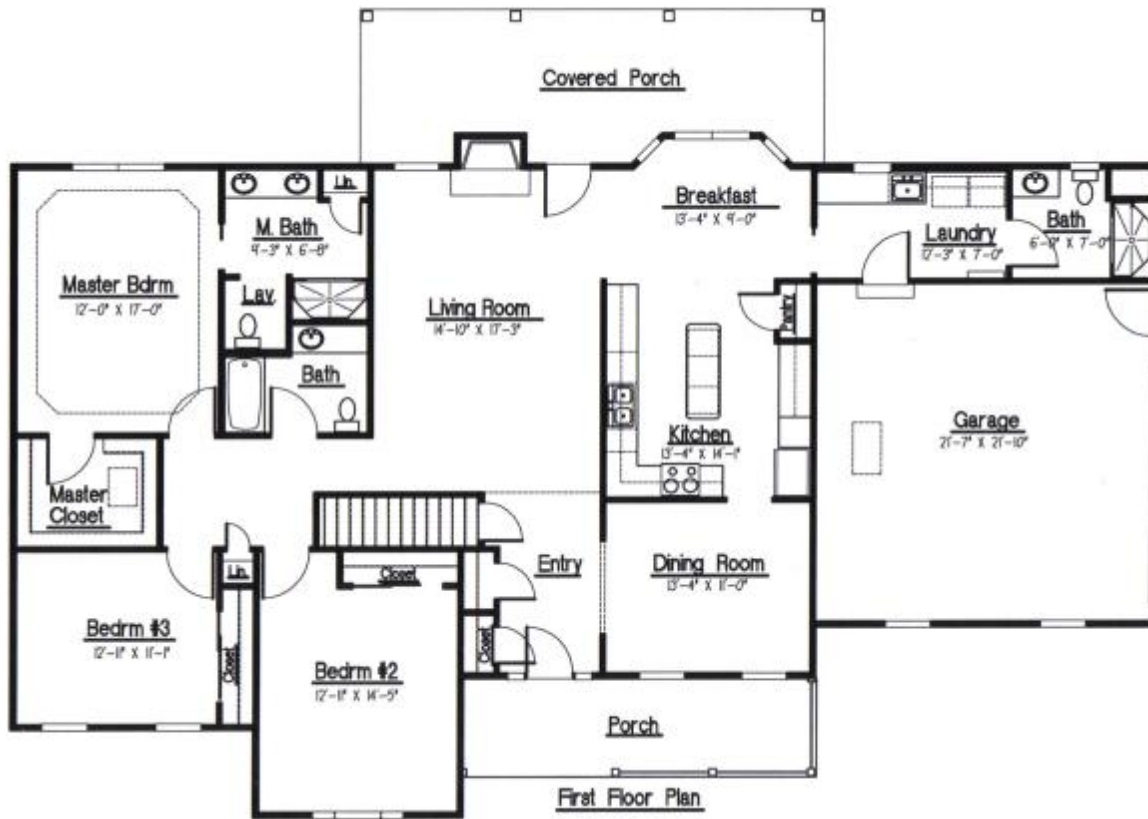
# The Caroline

3 Bedroom ♦ 3 Bath ♦ Open floor plan ♦ Generous 14x17 family room opens to cozy breakfast nook and modern kitchen ♦ Master suite with private bath and walk-in closet ♦ 1972 SF



Everything on one convenient level! The Caroline's open floor plan is great for entertaining. The generous 14x17 family room opens out onto the covered rear porch. On cooler days, everyone can gather 'round the centrally located fireplace. A cozy breakfast nook and a sleek, modern kitchen adjoin the family room. A master suite with a tray ceiling boasts its own private master bath and walk-in closet. Two other bedrooms share a second luxurious bath. Add your own personal touches to this plan and make it your own!





First Floor Plan

[www.AshleyHomesOhio.com](http://www.AshleyHomesOhio.com)  
740-420-3200

