

# The Christopher

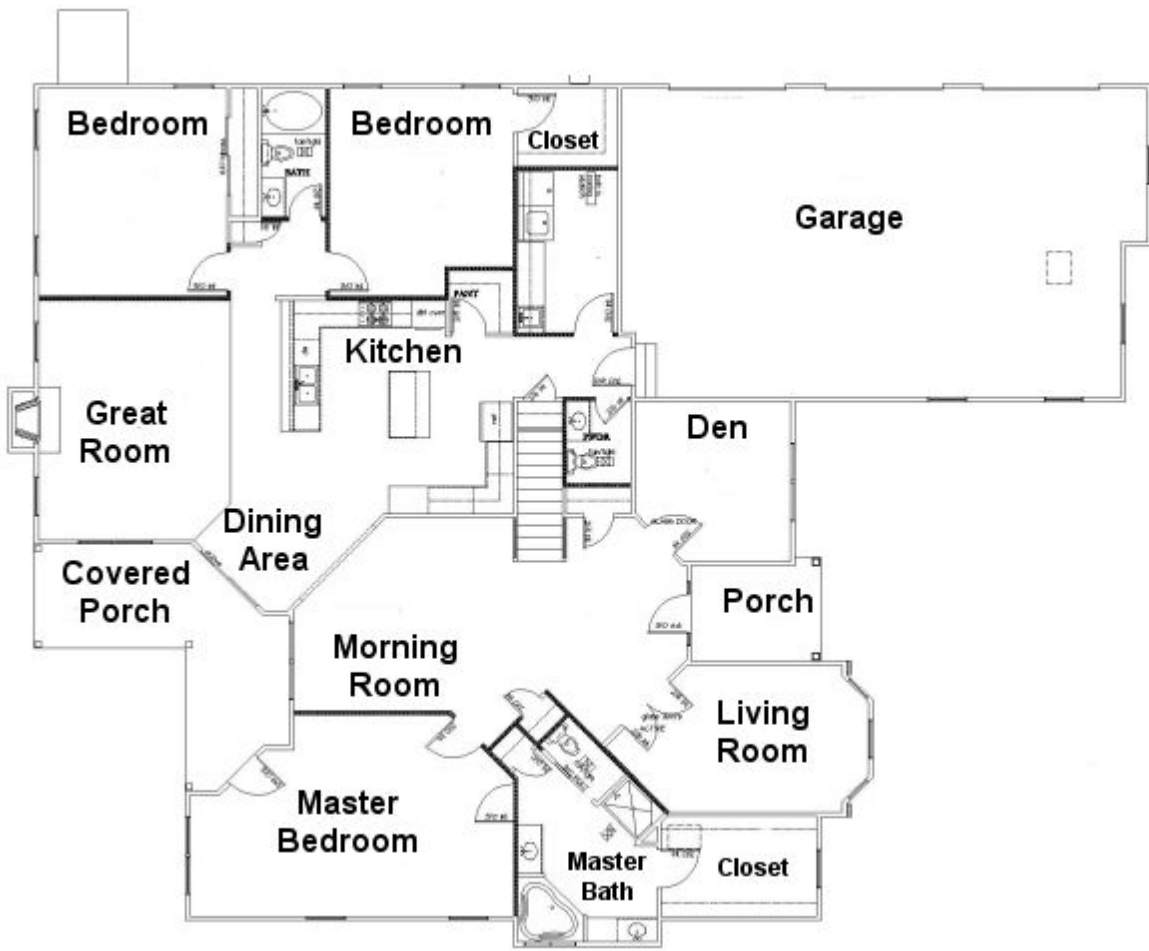
---

3 Bedroom ♦ 2½ Bath ♦ Open floorplan ♦ Luxury master suite has a corner whirlpool tub and separate shower ♦ Awesome kitchen with maple cabinets, granite countertops, an island, stainless-steel appliances, ceramic tile floors, and a raised bar ♦ Great room has a fireplace flanked by large windows on each side ♦ 3059 SF



The Christopher's modern floorplan places the kitchen and adjoining dining area at the center of attention. Adorned with maple cabinets, granite countertops, an island, stainless-steel appliances, ceramic tile floors, and a raised bar, the kitchen is a sight to behold. Thanks to the Christopher's open floorplan, the kitchen flows graciously into a dining area, the great room, and a morning room. There is a den and a formal living room. Placed on the south side of the house for privacy, the master bedroom features its own private master bath with a corner whirlpool tub and separate shower; there is also a huge walk-in closet. On the north side, the other two bedrooms share a second luxurious bath. A generous 3-plus-car garage rounds out the floorplan. Add your own personal touches to this plan and make it your own!





[www.AshleyHomesOhio.com](http://www.AshleyHomesOhio.com)  
740-420-3200

