

# The Gavin

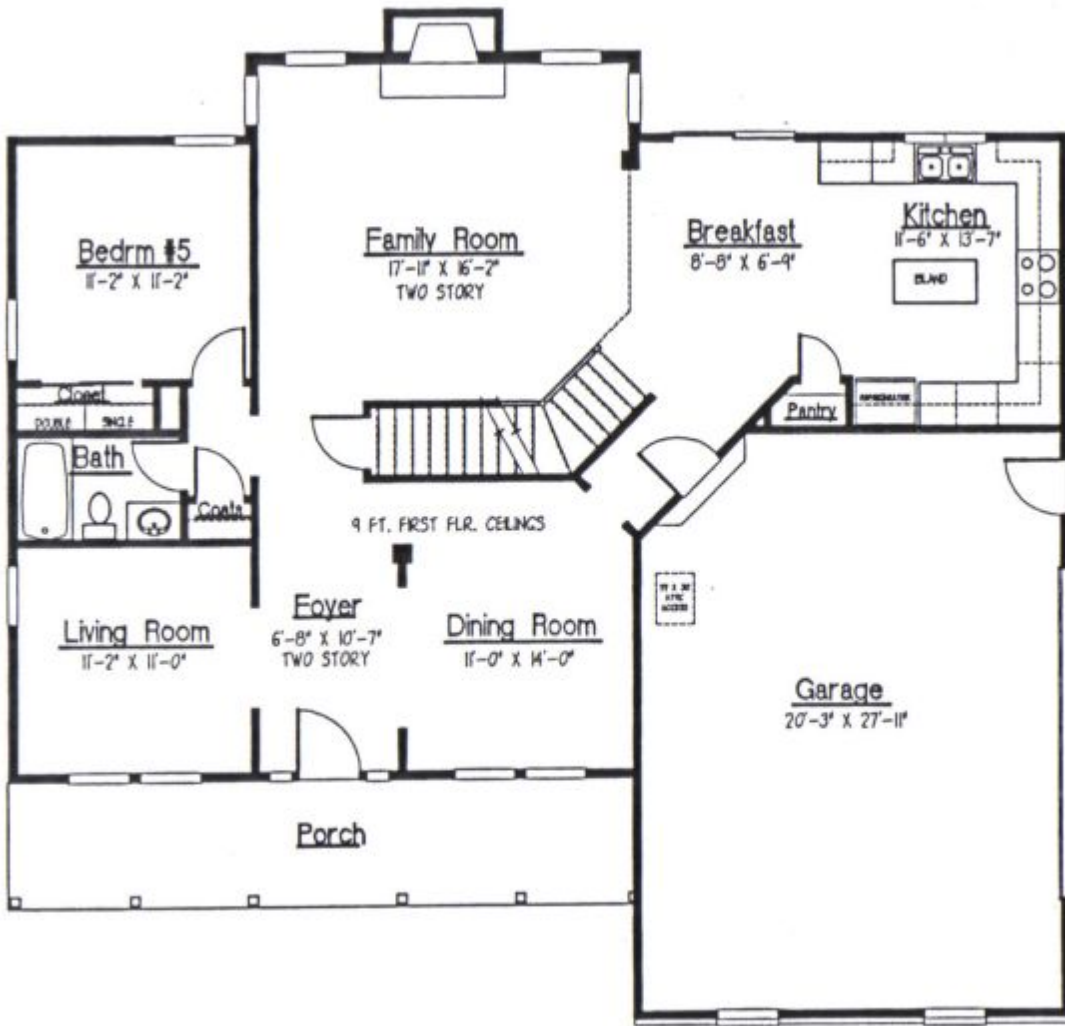
---

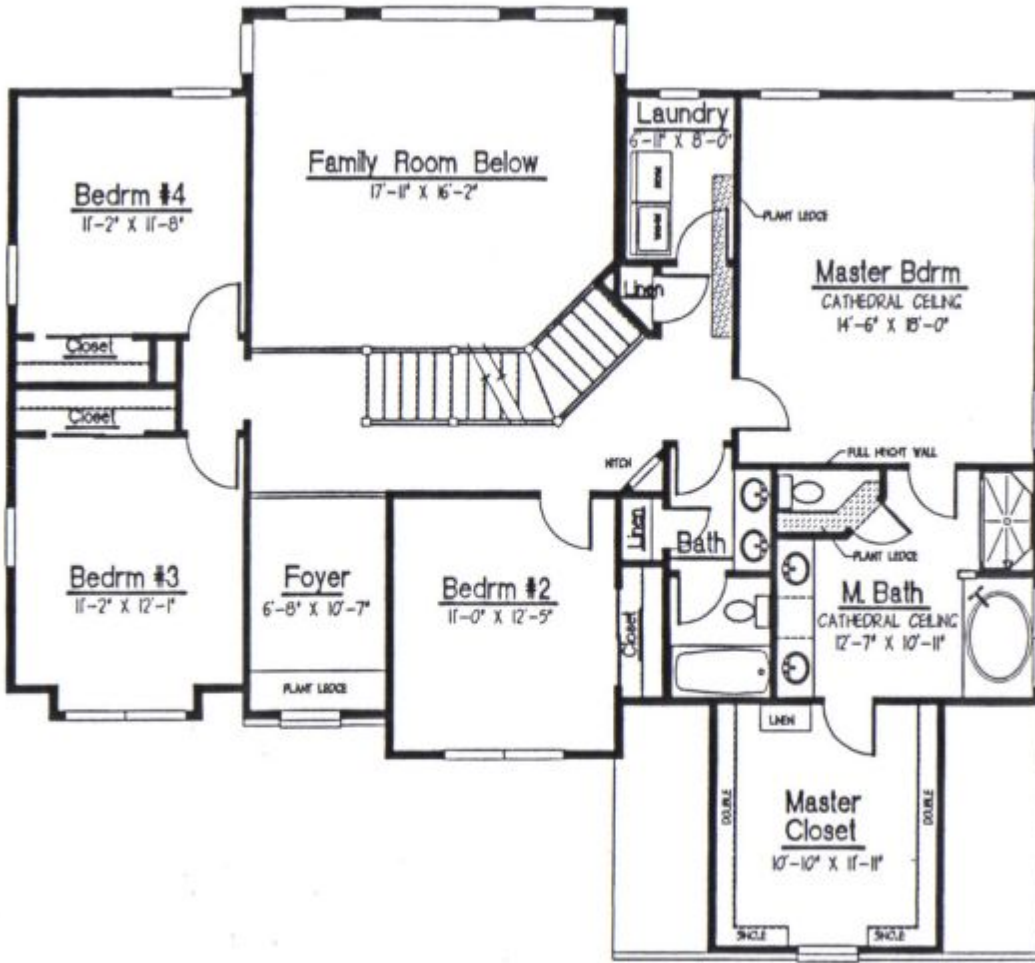
4 Bedroom ♦ 3 Bath ♦ Unique staircase punctuates open floor plan with 2-story great room featuring wall of windows ♦ 14x18 master bedroom with cathedral ceiling & private bath & 10x11 walk-in closet ♦ 2768 SF



A unique angled staircase punctuates the open first floor in this warm & cozy home. A huge 16x17 2-story great room adjoins a breakfast nook and modern kitchen. The first floor also boasts a full formal dining room, a living room, a bedroom or home office and a full bathroom. Upstairs, a 14x18 master suite sports a cathedral ceiling, a private master bath (also with a cathedral ceiling) and an enormous 10x11 walk-in closet. Three other bedrooms share a second luxurious bathroom. Add your own personal touches to this plan and make it your own!







www.AshleyHomesOhio.com  
740-420-3200

