

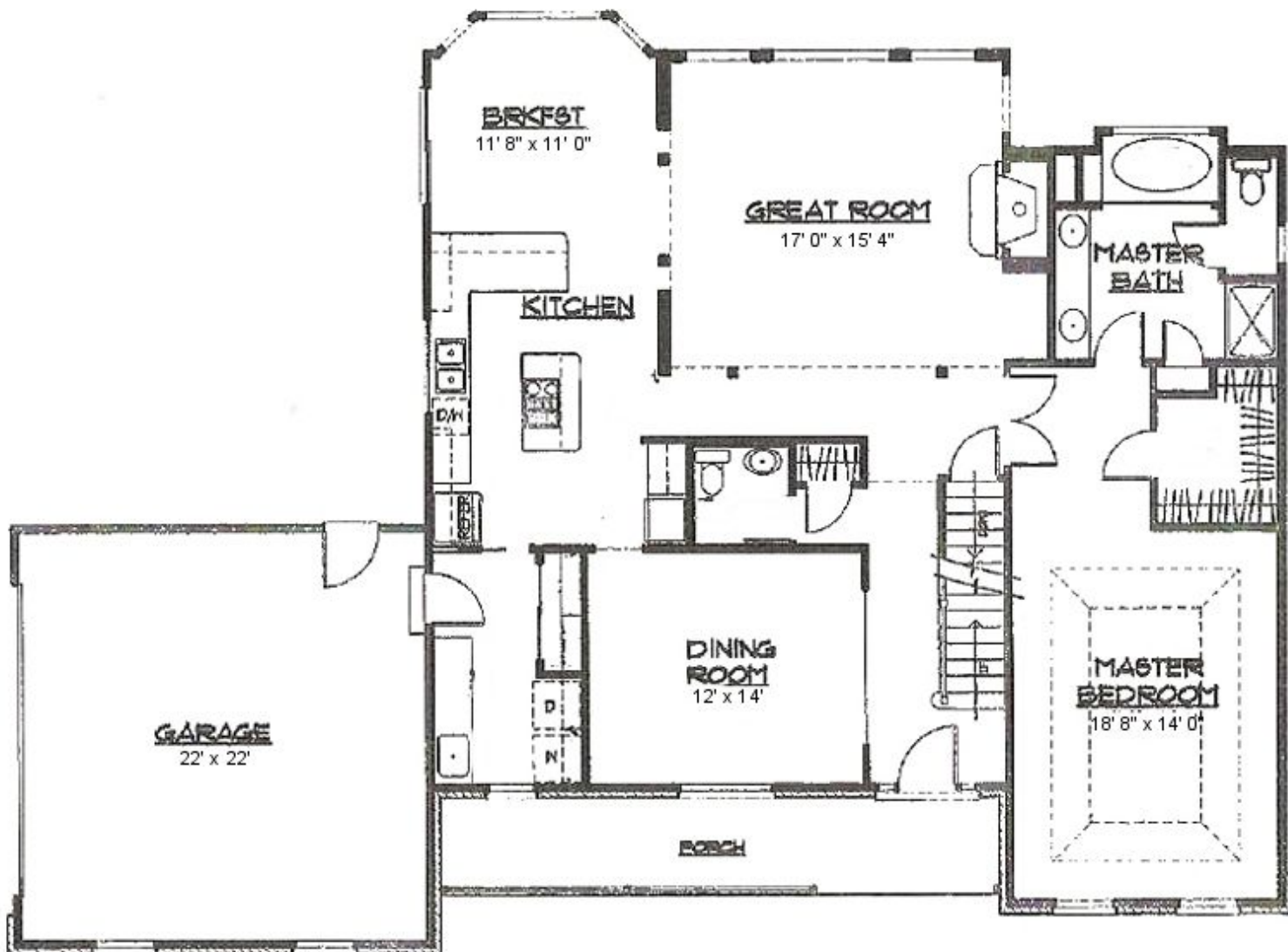
The Heather

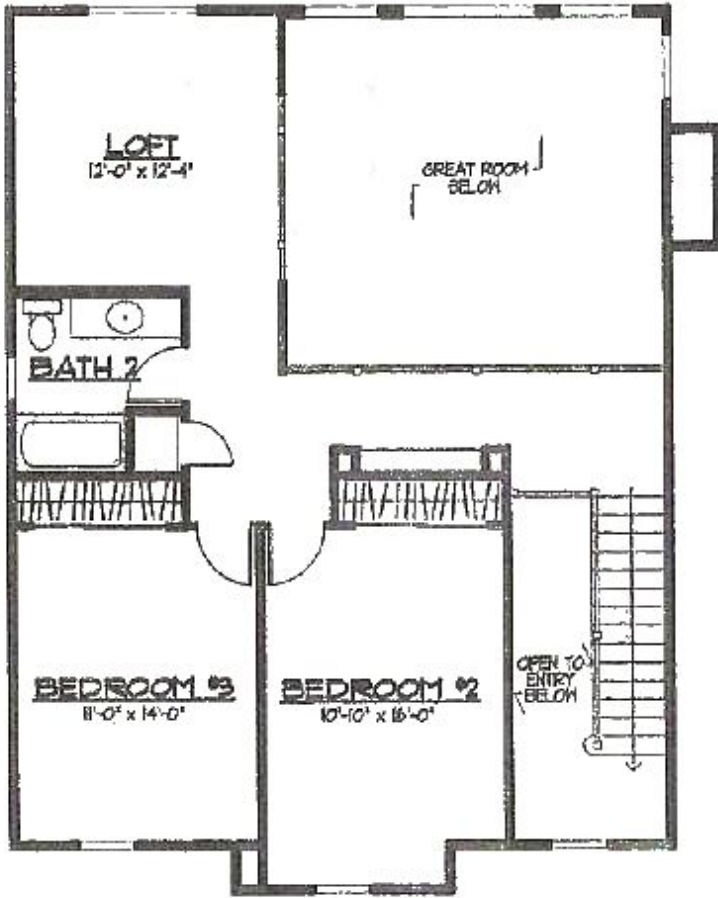
3 Bedroom ♦ 2½ Bath ♦ Open floor plan ♦ First-floor master bedroom with private bath including whirlpool tub ♦ 2444 SF



The Heather's open floorplan is perfect for informal gatherings! A great room with a fireplace and a towering wall of windows opens onto the kitchen and breakfast nook. The kitchen, with its sleek, modern appliances and granite countertops, is a sight to behold! There's a formal dining room and powder room. A generous-sized master bedroom boasts its own private bath--with whirlpool tub and his & hers vanity--and a huge walk-in closet. Upstairs, a loft--perfect for a home office--opens onto the great room below. Two more bedrooms share another luxurious bath. Add your own personal touches to this plan and make it your own!







SECOND FLOOR PLAN

www.AshleyHomesOhio.com

740-420-3200

