

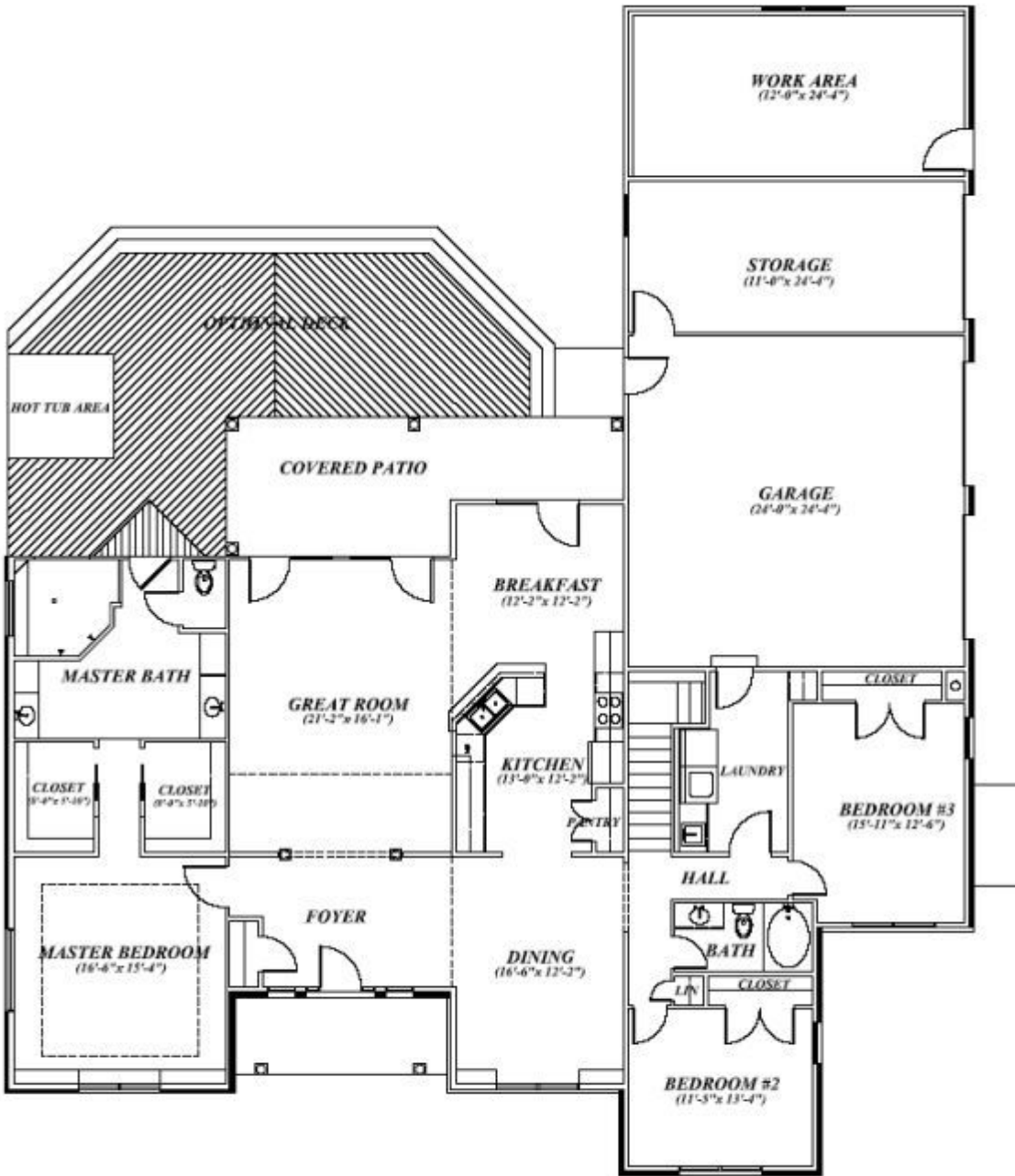
The Kathryn

3 Bedroom ♦ 2 Bath ♦ First-floor master with cavernous walk-in closet and ornate tiled walk-in shower ♦ Stunning entryway opens to huge 16x21 great room ♦ Master suite opens to hot tub on deck



A stunning entryway opens to a 16x21 great room, which then flows into a kitchen boasting sleek black appliances and an L-shaped island and eating bar. The open floor plan is perfect for informal gatherings & entertaining. The enormous first-floor master suite features his & hers walk-in closets, an ornately tiled walk-in shower, and French doors leading out to a private deck with a hot tub. Two other bedrooms--both with good-sized closets--share a second bathroom. Add your own personal touches to this plan and make it your own!





The Kathryn
 First Floor Plan

www.AshleyHomesOhio.com

740-420-3200

